

graffiti

SPRING/SUMMER 2013

INSIDE...

- **Higgins Transforms Landmark Building**
Mercedes Building, 222 Kings Way, VIC
- **Higgins Apprentices**
Proud Achievements
- **Camp Quality**
Supporting Children with Cancer



Managing Director's Update



It's been a busy year so far at Higgins with our on-going programs and a broad range of new projects across Australia and New Zealand, and things are certainly not slowing down.

Our continued growth has seen recent new development into regional markets. We have already expanded in Victoria with the Geelong branch opening in July; the Victorian Repaint Team has moved into its own building to accommodate their growing team; and further branches in New South Wales and Queensland are planned to open in the next quarter.

These expansions have allowed us to focus on numerous national, multi-site repaint projects. Our larger geographic spread is enabling us to more effectively offer our clients consistency in quality, service, pricing and importantly, one point of call to manage their painting and maintenance projects.

At Higgins, we believe our people make the difference and Ryan Czerneckyj and James Seabrook are doing just that. We are very proud of the achievements of these second year apprentices, detailed in this issue, and they are another example of the true professionalism that our tradespeople continue to show through their hard work.

Giving back to the community is another area that is important to Higgins as a company, and we were very happy to recently provide support in the form of donations to both Melbourne City Mission and Sacred Heart Mission. Camp Quality is also a cause close to our hearts. We have not only just made a significant donation to this wonderful charity, but also introduced 'PlayPay' to the Higgins team, where employees can get involved by making monthly donations directly to Camp Quality.

In other news, our new website is up and running! Please visit us at www.higgins.com.au and www.higginscoatings.co.nz to see all the latest information about the company, our services, projects, people and what's been making news.

Lastly, I'd like to thank you for your continued support and we look forward to providing you with the latest project snapshots and industry updates in the next issue.

Gerard Higgins,
Managing Director

Higgins Apprentices – Proud Achievements

At Higgins we really value our apprentices and the contributions they make to the company. It is wonderful to watch them grow and develop their skills, as they cement their expertise for successful careers ahead. Congratulations in particular go to two of our apprentices with very impressive achievements this year.



James Seabrook (QLD)

James was runner up at the World Skills Australia Regional Competition 2013 in Painting and Decorating. James missed out on first place by only ONE point, but had a lot of fun, gained valuable experience by participating and is focused on taking out the main prize next time!

“ I really enjoy working for Higgins and the variety of jobs you get in a commercial environment. Other large companies I have had experience with are no comparison. The training, guidance, management and support I have received has been invaluable. Hopefully using the skills I've gained from Higgins I can go on to take out the gold medal in the 2014 World Skills Australia Regional Competition in Painting and Decorating. ”



Ryan Czerneckyj (VIC)

Ryan has won Apprentice of the Year and Best Overall Apprentice at NMIT for the second consecutive year, a truly outstanding achievement. Ryan says that he loves the variation that his job provides and couldn't imagine doing anything else, “the scenery is constantly changing, one month you might be painting a 30 storey building and the next you're 2 metres underground.”

“ I couldn't be any more proud of my son and how well Higgins have nurtured him and given him a chance. He loves the company and plans a very long career there. ”

Halia Senu (Ryan's Mum)

Melbourne City Mission – A Brighter Future for Melbourne Youth

Melbourne City Mission works with some of the state's most vulnerable individuals, families and communities, helping thousands of people to build a better future for themselves. As part of our ongoing support to community projects, we were excited to be able to assist Melbourne City Mission with a donation of \$10,000 towards the critical refurbishments required for their newly located head office building.

Higgins was employed to paint the external façade, which involved plenty of logistical challenges due to its location at the end of Kings Way, just before the on-ramp to the freeway. We had to employ several methods, involving traffic management and rope access, to get the works completed with minimal disruption to pedestrians, traffic and employees of Melbourne City Mission.

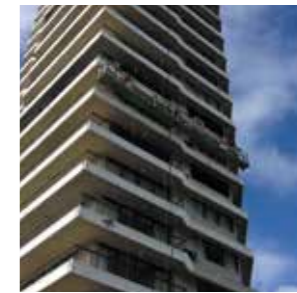
What's News at Higgins...



Camp Quality – Supporting Children with Cancer

Camp Quality reaches out to over 3,500 families a year, as they try to continue with their everyday lives after their child has been diagnosed with cancer. John Higgins, Chairman of Higgins Coatings, has been involved with Camp Quality for nearly 10 years, and during that time he has witnessed first hand just what a positive difference their help and support can make to these families.

This year, Higgins Coatings donated \$50,000 to Camp Quality, which will ensure that a newly diagnosed child with cancer can access all the support they need during the first 12 months, while they are on active treatment. All of us at Higgins have been so pleased to be able to contribute in this way to such a worthy charity and we're currently in the process of establishing an ongoing workplace giving program.



Work, Health & Safety

At Higgins, we value our staff and place a high priority on safety in the workplace. Working at heights is one of the major risks associated with commercial painting; and due to the range of access equipment we utilise on various projects, it is critical that we ensure employees

and contractors are operating safely and being supervised accordingly. As part of this ongoing commitment, Higgins recently engaged an external independent Work, Health & Safety consultant to audit sites in Queensland, New South Wales and Victoria. This provided us with valuable feedback, advice on differing state regulations, and specific recommendations.

We are also pleased to welcome a new member to our team. Chris Langley, our new national Work, Health & Safety Manager, brings a wealth of experience to the role through his background in training and health & safety with large national businesses. His expertise and personable approach will be of much benefit to Higgins as he works with the branches to maintain safe work sites for all employees and contractors.

New Construction

Higgins Coatings has a reputation for providing innovative painting solutions of the highest quality and this has led to various exciting, major projects for our New Construction Division located in Melbourne. With clients across a range of sectors, the following recently completed and on-going projects involve differing scales of work and requirements to fulfil.



Precinct Apartments

Inner suburban apartment developments are a thriving industry with the ever-increasing demand for more housing close to our major cities. Higgins has extensive experience in this type of project and, as a result, was awarded the contract to complete all painting works for Probuild's new Precinct Apartments.

Located in vibrant Abbotsford/Richmond, boasting expansive views of the nearby Yarra River and CBD, the \$115M, 10,000m² design and construct project includes 460 apartments over five separate buildings. This major contract has seen Higgins station 35 painters on site full-time for nearly 6 months, to complete all internal and external painting of the apartments and the multi-level basement car park. A Supervisor has continued to make regular site visits to keep everything on track and be available to deal with any unexpected circumstances as and when they arise.

With completion expected for the end of December, our expert team has delivered high quality work within the specified time frame for another successful project outcome.



6 Star Green Star Rating for New Docklands Gateway

700 Bourke Street

Heralded as a gateway to the Docklands precinct at 'Bourke Junction', the mixed-use development at 700 Bourke Street is an innovative and environmentally responsible new presence.

As one of the two new commercial buildings by Brookfield Multiplex for the site, it represents a major coup for our experienced team. Every dedicated space of the 16 level development has a different requirement. The 12 month project involved thorough planning and expert processes to carry out the extensive internal painting works and overcome access difficulties, such as those presented by the impressive multi-level atrium.

The design achieved a 6 Star Green Rating with key elements that focused on the building being environmentally sustainable and accessible for the local community. Higgins assisted the project to achieve this rating by working with Dulux to select and apply specialised green-accredited products to all surfaces, ensuring that coverage and quality were not compromised.



700 Bourke Street Exterior



700 Bourke Street Interior
Photos courtesy of Brookfield Multiplex



720 Bourke Street Exterior

720 Bourke Street

This second 16-level office building at 'Bourke Junction' is currently under construction and will feature extensive and impressive greening to the facade. 720 Bourke is a prestigious building also targeting 6 Star Green Star Office v3 rating and a 5 star NABERS rating.

The Higgins team was also successful in winning the contract to undertake the major internal painting works for this project, due for completion in March 2014. With a bold design vision and unique, large-scale features, we relish meeting the challenges that a development of this magnitude demands.

The site will include a mix of office tenancy space with tower levels 1-10 anchored by Medibank and 11-16 with a mix of other tenants. The ground floor and level one will feature retail and food outlets, while the concourse level will have a Medibank clinic.



720 Bourke Street Interior



Facilities Management

Higgins has a successful history of implementing painting management programs as part of the maintenance for all types of buildings in various industries. This issue, we take a look at one such on-going major project.

National Australia Bank (NAB)

Higgins Coatings is engaged to carry out the maintenance painting of NAB branches throughout Australia, a major contract that we are very proud to manage. We regularly service WA, SA, NSW, QLD and VIC and have also done works in NT and TAS.

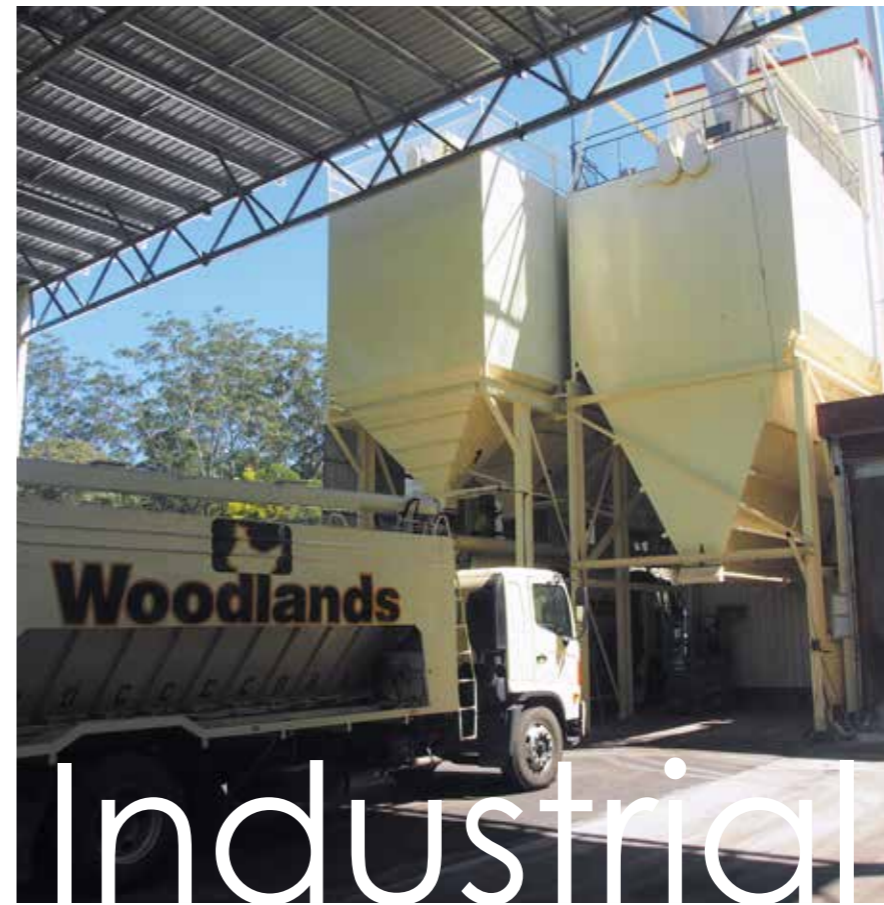
In the past two years alone, our teams have painted over 100 branches in different states, as well as many of the NAB's commercial sites, including 800 Bourke Street in Melbourne's growing Docklands precinct. This has involved teams working in both city and country areas, with some branches being as far as 500km from city centres.

Part of the on-going works has been to bring all branches in line with the NAB branding guidelines. Carrying this out in functioning bank branches has obviously involved particular conditions. All painting has to be completed after hours so there is no disruption to the branches and their customers.

And all locations have also involved a high level of security. All in all, a project requiring expertise, organisation and thorough planning – definitely a job for Higgins.

“ Higgins provided great flexibility, working evenings and weekends to complete the approved works in the agreed time-frame. This has provided minimal disruption to staff. Higgins have provided national coverage to well over 800 sites covering a demographic reach from the central business district, metro and regional areas. ”

Jim Spanos
National Manager – Projects



Woodlands Enterprises

Woodlands Enterprises Pty. Ltd. was established in 1913 as a strawberry and pineapple farm, later branching into poultry. Today Woodlands still has its founding family connections with a family team that manages 180 staff at its Beerwah headquarters. Here the plant processes 650,000 fresh chickens weekly; including chicken pieces, deboned chickens and value-added chicken products.

The Higgins team on the Sunshine Coast have been given the on-going job of refreshing the appearance of the facilities and then maintaining them for next 7 years. The initial phase involved thoroughly cleaning the surfaces, which was carried out using a combination of industrial rope access (abseiling), boom lifts and scissor lifts. Areas in a worn condition were then painted using Dulux Industrial Coatings to ensure they would maintain their look in the high wear and tear environment.



Commercial Buildings

Higgins continues to show that we are experts in dealing with the different constraints that commercial buildings can demand. Removing risk and minimising disruption to everyday operations is imperative when working in the public arena. That's why Higgins has become the trusted choice in commercial buildings with our professional, people-conscious approach, WH&S compliance, crowd control, traffic management plans and specialist abseil team – our company motto “Whatever It Takes” in action!



Morayfield Village

Higgins Coatings are the preferred contractor for work to Morayfield Shopping Centre and Morayfield Village. Higgins has just completed the repaint of the external of Morayfield Village that is positioned at the front of the main shopping centre and is on the main road of Morayfield QLD. The client has long term leases within this building and was after a option to keep the building looking fresh for the next 6 years. We worked with the Operations Manager and put forward a 6 year maintenance program that has given the building a new fresh look and Higgins will return annually to maintain and complete a wash down of the building to keep that fresh and new look.



Harbour Town Shopping Centre

Harbour Town Adelaide engaged an external colour consultant and designer for the re-branding of the external surfaces of the shopping centre. Our Adelaide branch was the successful tender and has completed stage 1 of the project.

To eliminate any inconvenience to shoppers, we carried out the work during the night utilising three painting teams. We now look forward to commencing the next stage of the centre's refurbishment.



TYCO Traffic and Transportation

TYCO is an industrial company located in the western suburbs of Sydney that specialises in safety equipment. The building's long history has seen two extensions and the addition of new brands to the portfolio, and as a result, the challenge of the project was to bring the three sections of the building together with a fresh, new look that represents the company's overall brand image.

The building experiences heavy business traffic during the week, so we are conducting all works on the weekend, which will include a wash plus painting of all exterior facades, roller doors and bollards.

Our Expert Abseilers Fly High Again...

Norris Ward McKinnon House

The Norris Ward McKinnon, managed by Colliers International, is one of Hamilton's tallest buildings. From Higgins' point of view, the project had various complexities; namely the multiple access equipment requirements, including mobile scaffolding, knuckle booms and abseilers; and a combined effort from our Auckland and Tauranga branches was required to work through them.

In addition, Higgins was given this contract at a time when our abseil team was in high demand on other high-rise buildings requiring painting and annual maintenance. In response to this challenge, we employed two new full-time abseilers and one other in training. Now with a larger team of expert abseilers to draw on, we can remain strong and competitive in the high-rise sector of the painting market.

The final outcome of the project was that the iconic “blue loo” (as it is so aptly dubbed) has received a much-needed wash and repaint from car park to lift house, leaving the exterior elevations in a pristine and freshly coated condition.



Higgins Completes Extensive Flood Restoration Hinkler Shopping Centre Bundaberg



Mirvac's Hinkler Shopping Centre (QLD) was severely affected by the 2013 Australia Day floods with water depth reaching 9.25m. This resulted in the flooding of the centre's undercover car park and partial flooding throughout the retail area. The centre was closed and all tenancies (the three majors; Kmart, Coles, Woolworths and 70 specialty retailers) had to remove all stock and partially demolish fit-outs to allow the comprehensive drying and decontamination process to be completed.

The damage wasn't limited to the interior trade areas of the centre. The external walls were also stained by the floodwaters, so Mirvac needed a large, reliable organisation to provide a complete painting package. Our experience and reputation won us the job and we completed the extensive painting works to the external surfaces in a very short timeframe – a vital condition to minimise disruption and lost earnings as much as possible.

“ Higgins was extremely helpful in providing prompt advice and giving us confidence they could meet our requirements. The delivery of the project was as promised with the team working 7 days a week to get the job done on time and the results looks fantastic. ”

Brian Hennessy
Divisional E&O Manager
Northern Zone Mirvac Asset
Management

Commercial Buildings



Before



After

Higgins Transforms Landmark Building Mercedes Building, 222 Kings Way, VIC

The Mercedes Building stands in a prime location on Kings Way in South Melbourne, highly visible from the nearby major freeway. The project involved painting the tower's exterior with a complex colour design and came with some challenges due to the conditions in the building's location.

Higgins beat three other contractors to be awarded the job for Owners Corporation. Our experience and proven results weren't all that impressed, our willingness to go the extra mile for the client – including outlines of our proposed methodology, works schedule and car parking schedule (which spaces needed to be vacant at what time) – also put us ahead of the pack for this exciting project.

The building design for the tower's exterior incorporated a spiral-type motif, which seemingly reflects the sun's rays. Fourteen different colours of Dulux Weathershield were used to achieve the look and our team employed swing stages in twelve separate drops around the building to complete the works.

To paint the multi-storey motif design, it was necessary to get the diagonal line on each corrugated substrate as straight as possible – no easy feat. The Higgins solution... our painters utilised chalk lines and masking tape to produce a perfect diagonal line every time. Our expert abseilers were also in action to paint around the Mercedes sign on the roof of the building.

The location of the tower is subject to high winds and this did cause some delays, as swing stages cannot be used if these conditions become too extreme. The project has now been successfully completed to the great satisfaction of our client. The result is an eye-catching building that stands out from the crowd and Higgins is proud to have brought about this transformation.

“ Working with Higgins on this prominent and restricted site was easy with a splendid result. ”

Herb Greenwood
Director
Perrott Lyon Mathieson Architects



Education

Our work in the education sector involves ongoing contracts for painting maintenance programs, as well as individual projects. It is always enjoyable to see a learning centre receive a positive transformation, after all, they are places where children spend a lot of their time and environment obviously has an affect on children and their learning.

A Heritage Beauty Restored – Sacred Heart College

Sacred Heart College Senior promotes a passion for education and boasts state-of-the-art facilities, with a mixture of original buildings and exciting, new developments, such as the Performing Arts Centre and the Marcellin Learning Centre.

The jewel in the crown of this Adelaide school campus is the beautiful, heritage building that houses their main administration. It was in need of repairs and an effective maintenance program and Higgins was engaged to partner the college in managing these works. From its decorative cornicing, coins, and ceramic inlayed tiles, we are delighted to be involved in restoring this fine, well-aged beauty to her original pristine condition.

These heritage features provide an opportunity for the South Australian branch to showcase our skills and impress with our ability to successfully manage the responsibility of such a significant landmark property.

“ We needed a company with the resources to finish sections of the building exterior in a short time frame and also demonstrate that they could comply with our workplace health and safety requirements. On recommendation from an existing customer we selected Higgins. Progress to date has been very pleasing, the professionalism of the team on site and support of their management has enabled us to carry out this project with minimal impact to the college's operation. ”

Liam Crocker
Maintenance Manager
Sacred Heart College Senior



A Bright New Paint Job is Kid's Play for Higgins!



Kid's Time Early Learning Centre

Higgins recently won the job to paint the Kids Time Early Learning Centre at 488 South Road Moorabbin, in Melbourne's south east/bayside area. It was important not to upset the daily running of the centre, so the job was scheduled in over two weeks to include some weekend and after hours work to achieve this.

A colour consultant was used in planning the best colour scheme to adopt throughout the centre to cater for its important little clients. So our work included a complete colour change with multi-coloured balustrade fences and feature walls, doors and frames. Higgins also had to work in with a building company onsite, as there were alterations being carried out as part of the project.

The end result was that the job progressed smoothly and was completed on time, with a happy customer who provided a recommendation.

“ Higgins delivered high quality work and great flexibility, completing the project in the agreed time-frame and on budget, with no disruption to the centre. I was impressed with their attitude that nothing was too much trouble. ”

Chris Muller
Project Manager
Holmesglen Institute

Mission Beach State School

While the painting works required for Mission Beach State School, Nth QLD were very simple in terms of what Higgins usually undertakes, the job was no less important or rewarding for our team. Two of the external classrooms needed painting, which we carried out while they were not in use during the school holidays.

With our experience and capabilities, it was no surprise that we completed the project above the expectations of the school. What was surprising, however, was that the teachers and school kids were that excited about having freshly painted buildings that they sent us personalised thank you cards when they got back to school. The team was very touched by the gesture and were happy to have provided this simple, yet pleasing transformation.



“ We were extremely happy with the work that Higgins performed at our school. They were extremely professional to deal with and the works that they completed here were to a very high standard with very minimal impact on our school grounds. I would happily recommend Higgins to other schools. Being in a regional area the Higgins team had no hesitation to travel to our school which was a big plus! ”

Lauren Kanowski
Business Services Manager
Mission Beach State School

Putaruru Primary School

Putaruru Primary School is located in the south Waikato township of Putaruru, NZ. When the town's intermediate school was closed, the primary school pupils were re-located to this site and it was decided that the school needed a fresh look to suit its new students.

Since 2010, when the Board of Trustees engaged Higgins Coatings Tauranga, we have been fulfilling a seven-year painting maintenance program to offer continual building protection and keep the school looking its best and meeting the aim of the original revamp. Principal Trish Scown is happy with the results and said that the new colour scheme of the school gave the local Putaruru community and the students a great sense of ownership of their school.



Strata Management

Higgins has extensive experience working with Body Corporates and owners' groups to complete one-off repairs and repainting projects, as well as ongoing maintenance management programs. Different properties provide different challenges with the access and scope of works involved and we have the knowledge and expertise to handle all types of ventures.

"The Gallery"

1 Henry Lawson Walk

The Body Corporate owners of "The Gallery" wanted a fresh, new look for their apartment building located in the very popular neighbourhood of East Perth. Higgins was chosen for the job, carrying out the repainting works, after helping them choose a vibrant but restrained colour scheme to suit not only the area, but also the personality of the owners.

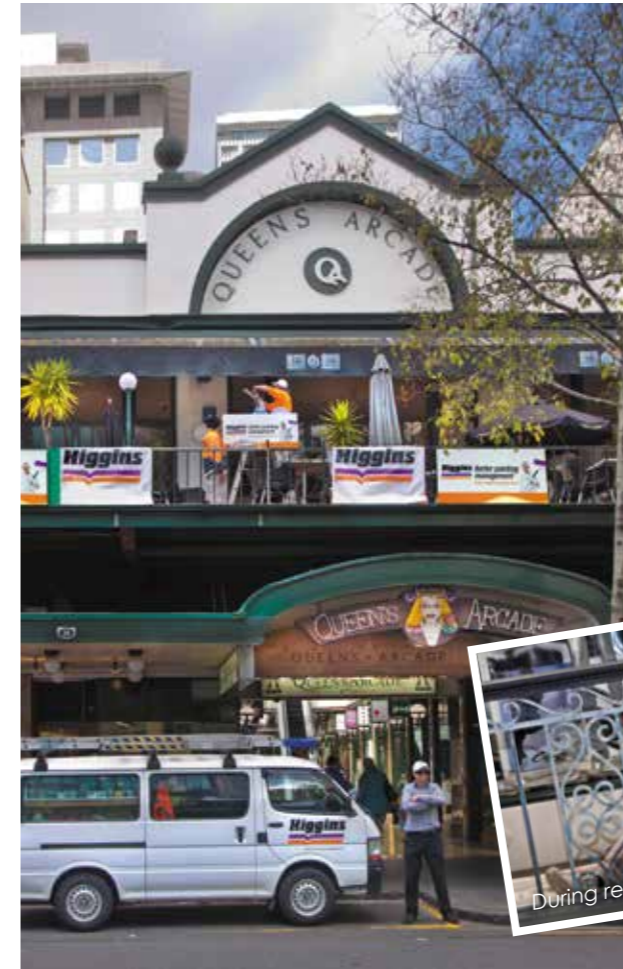
The project provided a challenge due to the multiple forms of access required and the restrictions in place from the local council, but with our excellent communication and project management expertise, the project was completed smoothly and in a timely manner.



1 The Esplanade, Mt Pleasant

1 The Esplanade, Mt Pleasant is an apartment building located opposite the famous Raffles Hotel and the busy Canning Highway in Perth. Significant building repairs were required and the owners engaged Higgins as the contractor due to our proven experience to manage such a project.

Our multiple resources, professionalism and "whatever it takes" attitude ensured that we were able to successfully complete the job to the high standard expected by the owners, whilst providing timely solutions to the difficult access conditions. And now the property is once again looking its best.



Old Girl Set for New Tricks Queens Arcade, Auckland

This Edwardian classic revival building with brick, stone and plaster facing was built to a design by architects Blomfield and Hunt. Construction of the Custom Street end and the adaption of two separate Victorian buildings to create the Queen St arcade all took place back in 1929.

Revitalising such period charmers is always a pleasure to be involved in, even as they provide unique challenges. The owners wanted a complete rebranding of the arcade with new colour scheme, total lighting overhaul and new signage features, as well as many other intricate changes to bring "the old girl" into the new millennium.

Our Auckland branch is proud to be undertaking the painting requirements of her major facelift project in late 2013. Specific access requirements will be necessary in order to complete the repainting in a timely manner with little or no disruption to the public, as requested by the owners. This will include the use of knuckle booms, electric scissor lifts, industrial abseiling and mobile scaffolds.

Another specified requirement is that all interior painting work must be done at night with no trace of equipment being left in the arcade for the next day of trading, so our hours of work will be 6pm to 6am. This has required a great deal of planning, particularly as it is a very busy time for our team with school

holiday work and the beginning of the busy Summer months. But we live by our company motto "whatever it takes" and some expert scheduling and hard work will ensure this is another unique project of which Higgins can be truly proud.

"Repainting Queens Arcade is an iconic project, so it is particularly important that it gets done right. We look forward to continuing to work with Higgins."

Michael Urquhart – Asset Manager of Queens Arcade



Portsea Village Grange

Portsea Village Grange, located in the hugely popular holiday destination of Portsea on Victoria's Mornington Peninsula, comprises 31 apartments and various facilities including Conference Rooms, Board Room, dining area, squash court and gymnasium. It was a project that grew in scope and complexity during the quotation stage. What began as an upgrade to the external façade with cleaning and repainting, ended up comprising much more extensive works including carpentry repairs and a lighting upgrade with an emphasis on LED and 600lm lighting. We also quoted on removal of the old roof and replacement with a new Colorbond Ultra roof, as painting the existing roof was impractical due to its demise in this harsh coastal environment and access requirements due to the 38° roof pitch.

As it is an operational Conference Centre and holiday destination for owners and the general public, it provided a real challenge to meet their upgrade needs whilst ensuring noise was kept to a minimum and a clean as possible environment was maintained. We approached this by liaising with the full-time Manager each day to determine which areas we could work late in and which apartments had anticipated arrivals. We met all the challenges with thorough planning and essential flexibility.



“ We recently completed a major refurbishment of our property in Portsea. The apartment, resort complex underwent replacement of roof, drainage systems, lighting and several door and windows as well as a complete repaint. The attention to detail and follow up on weekly meetings with the project manager meant that this proceeded successfully and with a minimum of inconvenience during the six month period that this involved. We can recommend working with Higgins Coatings for a successful project. ”

Irene Osborne
General Manager



York Apartments

The York Apartments is a 28 storey residential apartment block bounded by York, Clarence & Jamieson Streets in the heart of Sydney's CBD, which also houses the Swiss-Belhotel. The building required a full external repaint, as well as the removal and replacement of planter boxes located on the bottom three ground levels on each of the three street frontages.

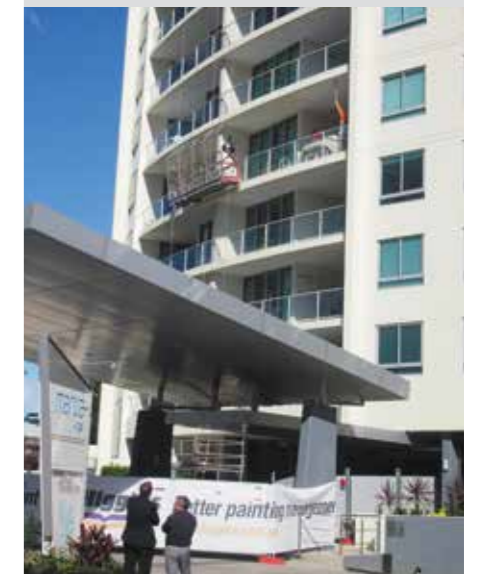
Higgins was contracted to undertake the works and we needed to utilise specific equipment to suit the building's environment. Full length B Class Hoardings were installed on the street elevations to protect the public from the works overhead and scaffolding fully enclosed with shade cloth was used to complete the planter box removal. We were able to predominantly paint the exteriors of the tower from the numerous balconies around the building and completed the remainder using our rope access specialists.



Mantra Wings

Our Gold Coast team recently completed the external repaint of Mantra Wings, Surfers Paradise. The Wings tower offers self-contained apartment and penthouse accommodation and stands on the site of the iconic Pink Poodle Motel built in the late sixties.

As requested, the crew carried out the works in between school holiday breaks so as to avoid any inconvenience for guests during these peak times. The Mantra management committee was pleased with the final results, giving positive feedback about the professional workmanship and management of the works that were completed.



Government

Government departments must be accountable for completing required works to high standards and within specified timeframes and budgets. Our proven track record in achieving this has ensured that Higgins continues to win projects in this area.



Moreton Bay Regional Council Administration Building

The Moreton Bay Regional Council Administration Building situated in Hasking St Caboolture (QLD) required a fresh repaint and render repairs. The building consists of 5 levels that houses council staff areas and also is the main office for property owners to pay services. Certain areas of this building were difficult to access due to the amount of pedestrian traffic going in and out of the building. Higgins worked with the council to have these areas completed out of hours so there was no disruption to staff members and the public.



Western Australian Royal Agricultural Society - Claremont Showgrounds

In preparation for this year's Perth Royal Show, Higgins were asked to complete the painting of the main pavilions. With a few months to go until the popular annual show, we had to plan, manage and implement a program that would see the work completed before the September 27 deadline.

Our Perth team once again showed their skills and experience in completing a quality project to meet the client's requirements. While this year's show has come and gone, the quality of workmanship will be around for years to come.

Metropolitan Fire Brigade (MFB)

Higgins recently completed internal painting of the MFB offices at 456 Albert St, East Melbourne, with works staged over a period of weekends to minimise disruptions to daily operations. The MFB were updating their internal branding, so required office cubicles to be repainted with the new colour scheme. Parts of the heritage-classed museum building also needed repainting.

To carry out these works, our specialised painters had to adhere to strict OH&S and legal requirements, including rulings about the equipment that could be used on-site. Higgins is now established as one of MFB's main contractors for future works, already forecast.



Health

Health and aged care facilities need particular attention to carry out works required while not disrupting residents. Aged care in particular is a growing industry and as such has seen Higgins contracted to complete projects, from staged painting programs to total refurbishments, all across Australia and New Zealand.

The public health sector welcomes Higgins' on-site sensitivity when planning and performing large-scale painting works. Private health facilities trust us to strategically manage a busy operational site with the utmost professionalism and discretion.

Our renowned attention to detail is advantageous for aged care and retirement living facilities that are looking for peace of mind and perfection.



St Ives Murdoch

Retirement Living

Having completed painting works at multiple St Ives sites, Higgins was thrilled to be asked to paint stage 4 of their marquee village in Murdoch, WA in 2012. St Ives were impressed with the high standard and timely results, so it was no surprise that this year we were awarded the contract to complete the repainting of stage 5 plus the internal and external of the main club house.

Once again, our experience and project communication ensured we were able to complete this work with minimal disruption to residents, who went about their daily business eating in the dining halls, playing cards, shooting snooker and reading in the library. We are delighted to see the finished product and look forward to working with St Ives in the future.



Kalyra Belair Aged Care

Kalyra Belair Aged Care is situated in the leafy suburb of Belair in the southern foothills of Adelaide. The facility is dedicated to providing a caring, home-like environment for its 92 residents. Set amongst tranquil gardens with superb views, the committed staff and supporting volunteers offer an excellent standard of care and a variety of group activities to cater for different needs and interests.

Higgins was awarded the job of undertaking the staged painting program that the site required and a high level of presentation and delivery of work was expected throughout the project. The positive feedback we received was welcome confirmation of another job well done, with appreciation given for the attention to detail and personal, site-sensitive approach shown by our team of painters.



A Superb Transformation by our Building Services Team Retirement Alliance

Retirement Alliance has owned and operated some of the leading retirement villages in Australia, for over 15 years. Higgins was employed to undertake all the trades and works required to complete an internal refurbishment project for Retirement Alliance in Melbourne's bayside suburb of Brighton East.



This involved a variety of works to update kitchens, stone surfaces, appliances, tiling, electrical, plumbing, carpets, floating floors and glass splash backs, as well as cleaning and re-painting each of the residences in the village. We set strict timelines and regulations to ensure that the project was completed to the highest standards and in a timely fashion to meet our client's expectations.

“ We appreciate Higgins commitment to completing projects within tight time frames and to a high standard. ”

Martin Earp
Facilities Manager



Higgins Team Excels with Expert Project Planning Cascades Retirement Resort

Cascades Retirement Resort is a luxury aged care facility located next to the Hamilton Lake Domain in Hamilton, NZ. Higgins were awarded the contract to repaint the exterior elevations of this timeless yet contemporary architectural landmark after tendering against leading local painting firms on a Dulux specification.

The architecturally complex design of the building, with its three-tone colour scheme and multi-substrate claddings, required us to devise an efficient and productive way of painting to ensure we could complete the works required to a high standard, on budget and on time. It was our superior plan of works that won Higgins this prestige job for the Sanderson Group, owner and project management company for Cascades.

The Sanderson Group were impressed with the planning and thoroughness of the Higgins team and were delighted with the results. From estimation and presentation, through to coating applications and client communication, we again delivered a successful project outcome.

“ Upon completion of the new extension at the Cascades we also had the existing apartments and rest home re-painted to give it a fresh new look. Higgins were the chosen company to undertake this work for the Sanderson Group. ”

Glenn Temple
Project Manager
Sanderson Group

Hospitality

The Hospitality Industry is fast-paced and often requires timing strategies to meet project needs without disrupting the supply of services to clientele. Our Higgins teams have a wealth of experience in this industry and recent projects have seen us in prestigious hotels, a heritage listed functions & events venue and an iconic Australian Brewery.

When a restaurant or event venue has to look its best, Higgins is there to guarantee an outstanding public image whether it is a new facility demanding international attention, or an existing structure looking to improve its appearance.



The Langham Hotel

The Langham Melbourne is a stunning hotel located in the CBD, which has been undergoing a refurbishment to its hotel rooms and corridors. The project involves all walls throughout the hotel being wallpapered, and all trims and ceilings painted.

Higgins was initially contracted for Stage 2 of the project, but the standard of work achieved by our team of expert wallpaper hangers and painters resulted in the request for us to stay on and complete the other remaining stages. We have finished the works of stages 2 & 3 and are currently completing stage 4 of the refurbishment.



Front entrance before



Front entrance after

A New Look for an Old Favourite

CUB's Abbotsford BrewHouse

Carlton United Brewers brands have enjoyed a pre-eminent position in Australian brewing since 1907. Their products have maintained links with Australia's brewing heritage whilst also continuing to develop a portfolio of favourites.

CUB commissioned Higgins to complete the landscaping upgrade at their BrewHouse in Abbotsford, Melbourne, which included works to the front driveway entrance, the rear and side of the BrewHouse and the beer garden. They wanted to open up their garden spaces and create a low maintenance landscape by replacing the overgrown shrubs, hedges and stumps with native Australian grasses and plants.

The landscaping design involved the planting of 'Ficus' or 'Dwarf Gum' trees, surrounded by native grasses. Pine bark

was also used to line the garden beds in a colour selected to best match the Carlton Draught branding colours. Best of all, our client was delighted with the efforts of our team and the final results. You can see for yourself if you visit the BrewHouse for a tour and beer tasting!

“Higgins was an absolute delight to work with. Their attention to detail was exceptional and they worked to a tight time schedule, working evenings and weekends to finish ahead of time! I would be very pleased to recommend Higgins for future projects.”

Lisa Scarlata
Event, Sales and Tourism Executive
Carlton BrewHouse

A Fresh Face for a 1920s Charmer – The Byron Kennedy Hall



Situated in the Entertainment Quarter precinct at Moore Park in Sydney, the heritage-listed Byron Kennedy Hall exudes 1920s charm and style. The venue is a popular space for banquets, cocktail parties, product launches, theme parties and special events, such as the Sleaze Ball & numerous Post Mardi Gras Functions.

Back in 1999 working for Civil & Civic, Higgins was involved in the refurbishment of the building as part of the Fox Studios Precinct project. So it is fitting that given our history, we were once again asked to fully repaint both the interiors and exteriors of this marquee facility.

Two of the spectacular features of the building are the Clock Tower and Central Dome, which were carefully prepared and repainted in accordance with a Dulux specification. Being a heritage-listed building, particular care needed to be taken by our team who used both mechanical access and specially engineered scaffolding for the Dome to ensure the weight loading requirements on the old timber floor were met.



Distinction Hotel

The Distinction Hotel is an iconic destination in Rotorua, one of New Zealand's main tourist destinations for overseas visitors. The management team of the Distinction Hotel chain decided that its Rotorua hotel could benefit from a repainting of the exterior with new colour scheme, a job that was awarded to our Tauranga branch.



The aim of the project was to enhance the image of the hotel by uplifting the appearance of the total complex and ensuring it remains a beautifully presented and inviting property for its guests. We successfully completed the job, achieving the aims set out by our client.



Sheraton Noosa

Higgins recently completed the internal and external refurbishment of the iconic Sheraton Noosa Hotel for Built. Thorough planning was required to undertake the works within the necessary timeframe and to the client's specifications.

We used a combination of boom lifts, fully encapsulated scaffolding and industrial rope access (abseiling) to reach all the painted areas of the building's exterior. For the interior, we had to carry out works whilst keeping parts of the hotel open for the touring British and Irish Lions. Our Sunshine Coast team was able to smoothly complete the painting within these parameters and deliver a high quality result for the 5-star hotel to their great satisfaction.





Our Services

General Painting

Maintenance Painting

National Multi-Site

New Construction

Building Services

Anti-Graffiti

Abseiling

**Health, Safety
& the Environment**

Australia

www.higgins.com.au
P 1300 HIGGINS
E info@higgins.com.au

Head Office
1/297 Ingles St
Port Melbourne VIC 3207

Melbourne
6/297 Ingles St
Port Melbourne VIC 3207

Geelong
PO Box 212
North Geelong VIC 3215

Sydney
25-27 Whiting St
Artarmon NSW 2064

Central Coast
PO Box 496
Artarmon NSW 1570

Gold Coast
3/6 Elysium Rd
Carrara QLD 4211

Brisbane
2/62 Bishop St
Kelvin Grove QLD 4059

Sunshine Coast
2/34 Technology Drive
Warana QLD 4575

Wide Bay
PO Box 235
Bundaberg QLD 4670

Townsville
2/43 Leyland St
Garbutt QLD 4814

Adelaide
9 Charles St
Allenby Gardens SA 5007

Perth
1/35 Guthrie St
Osborne Park WA 6017

New Zealand

www.higginscoatings.co.nz
P 0508 HIGGINS
E info@higginscoatings.co.nz

Auckland
1A/761 Great South Rd
Penrose 1061

Wellington
1/6 Northpoint St
Plimmerton 6006

Tauranga
29/23 Tukorako Drive
Mount Maunganui 3116

Higgins
Better painting management